

Free of charge

Kunitachi Sightseeing Map



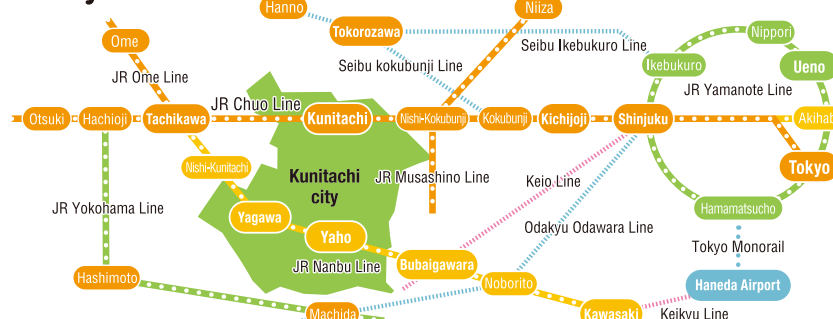
Published by the Kunitachi City

Kunitachi City Access Map

Lying just on the outskirts of the Tokyo metropolis, Kunitachi is surrounded by four cities. To the east, north, and west, are Fuchu, Kokubunji, and Tachikawa respectively, and to the south, beyond Tama River, lies Hino.



By train



With three JR stations located in Kunitachi, the city is within easy access.
To Kunitachi St.: 45 min. from Tokyo St. (Chuo Line)
To Yaho/Yagawa St.: 50 min. from Kawasaki St. (Nambu Line)

By car

Very close to the Chuo Expressway Kunitachi Fuchu IC. Express buses available (From Haneda airport and Osaka station to Yaho station)

Outline of Kunitachi city

Area: 8.15 km²
Population: 76,256 people (As of January 1st, 2020)
Households: 38,183 households (As of January 1st, 2020)

City bird: great tit
City tree: ginkgo
City emblem: plum flower

Published in Mar.2020 NFS
Published by the Kunitachi City
☎ +81-(0)42-576-2111

Authorized by the Kunitachi Tourism Association (NPO)



History of Kunitachi

— Jomon period 4000 BC Earthen vessel adorned with face 01



01 Earthen vessel adorned with face [D-4]

Dating from the Jomon period, this earthen vessel, unearthed at Nanyoji Remains, was once used for special occasions. (Kyodo Bunka Kan)

— Tumulus period Shimo-Yabo burial mound, Shikenzake Remains 02

— 1923 Great Kanto Earthquake

— 1924 Hakone Tochi Kaihatsu Corp begins development of 3.3km² of land.

— 1926 Kunitachi Station opens 03

— 1927 Tokyo University of Commerce (Hitotsubashi University) partially relocates, Kanematsu Auditorium is inaugurated. 04

— 1928 Social Welfare Foundation TAKINOGAWA GAKUEN, the first institution for the mentally impaired in Japan, relocates from Toshima Ward.

— 1930 Tokyo University of Commerce (Hitotsubashi University) fully relocates.

— 1934 Kunitachi Town Group and Yabo YMA plant cherry trees along Daigaku Street. 05

— 1945 World War II ends.

— 1951 Yabo Village becomes Kunitachi Town, town administration begins.

— 1952 Kunitachi Town is designated as an educational district. 06

— 1967 Kunitachi Town becomes Kunitachi City, city administration begins.

— 2000 Kunitachi City declares itself a city of peace. 07

— 2006 Fuchu irrigation system is chosen as one of the top 100 national irrigation systems. 08

— 2020 THE FORMER KUNITACHI STATION will be rebuilt & reopened as a hub for promoting our city.



02 Shimo-Yabo burial mound, Shikenzake Remains [D-4]
Pictured is the grave of a local clan that inhabited the region during the 7th c. Its horizontal chamber was built with stones from Tamagawa River. The grave was transferred to Shikenzake Park, where it remains preserved.



03 Kunitachi Station building with its distinctive red triangular roof [D-1]
Donated by the Hakone Tochi Kaihatsu Corp., Kunitachi Station opened in 1926. 2020 THE FORMER KUNITACHI STATION will be rebuilt & reopened as a hub for promoting our city.



04 Kanematsu Auditorium, Hitotsubashi University [D-2]
This Romanesque style auditorium was designed by Chuta Ito and is noted for its attractive demonic ornaments. A common venue for concerts and lectures, it is popular among local citizens.



05 Cherry trees along Daigaku Street [D-2/D-3]

With the support of the town council, the Yabo YMA planted cherry trees along Daigaku Street to commemorate the birth of the prince (1933).



07 Anne's Rose

A gift from Otto, the father of Anne Frank, this rose plant was planted to commemorate Kunitachi's declaration of peace.



08 Fuchu irrigation [B-4/C-4 etc]

Pictured is the head gate at Aoyagi, the initial section of an irrigation system stretching 6 km. Dating from the Edo period, it is still in use today. (Kyodo Bunka Kan)

Culture and nature, we love both!

Kunitachi truly is a town where college life and agrarian life co-exist.

Upon exiting Kunitachi Station, you'll find a picturesque Daigaku Street stretching out before your eyes. Just past the shopping district, either side of Daigaku Street is bustling with young people making their way to and from Hitotsubashi University, the grounds of which bear red pines, remnants of the Musashino Woods that once flourished in the region.

Kunitachi has remained a safe and peaceful place to live, and is still rich in agriculture and nature. Just south of Yabo Tenmangu Shrine lies fertile land abundant in rice, fruits, and vegetables, land enriched by spring water fed through ancient irrigation systems. Kunitachi is a unique modern town that has preserved both its culture and agricultural heritage.



Daigaku Street

Daigaku Street decorated with seasonal foliage. One of the top 100 new sightseeing destinations in Tokyo.



Yabo Tenmangu Shrine

Relocated in 1181, Yabo Tenmangu is dedicated to Michizane Sugawara, god of learning and patron of farming.



Photo: FUKUSHIMA koshi

Town of education and art

With its various educational institutions, as well as its 20 some art galleries, Kunitachi is a center for not only education but also art.



View of Mt. Fuji from Tama River

From bike paths running along Tama River, one can command a splendid view of Mt. Fuji rising above the Tanzawa mountain range.

Event Calendar

Come enjoy popular traditional festivals and seasonal markets!

Spring

春 Haru

March~May



Plum Blossom Festival [D-4]
Last weekend in February

At Yabo Tenmangu Shrine, festival goers enjoy elegant tea ceremonies under a splendid canopy of pink and white plum blossoms.



Cherry Blossom Festival [D-3]
First weekend in April

Coinciding with the cherry blossom viewing season, two days of festivities are held at Yabo Park No.3.



Cherry Blossom Walk
Sakura cherry blossoms on a Sunday

9-km walk starting at Showa Memorial Park and ending at Daigaku St. offers visitors various spots for flower viewing.



LINK Kunitachi [D-2] May

Every year, Daigaku Street is closed to traffic to make way for this sports event. In addition to a three-hour endurance relay race, various city sports organizations hold their own events.

Summer

夏 Natsu

Jun~August



Hydrangea Festival [D-4]
Last weekend in June

The flowing petals of some 800 hydrangea plants decorate the early summer evenings at Yabo Tenmangu Shrine.



Chinese Lantern Plant Market [D-4]
End of June

Vermilion Chinese lantern plants were once highly valued for their medicinal properties. The market is held in Yabo Park No.1.



Kunitachi Morning Glory Market [D-2]
First weekend in July

Early in the morning, beautiful blossoms of the morning glories line Daigaku Street. Visitors don yukatas and stroll along the street.



Bon Festival Dance
End of July to beginning of August

A common scene during summer, people dance around a tower to the beat of taiko drums in a traditional dance called Bon Odori.

Autumn

秋 Aki

September~November



Autumn Festival [D-4] September 25

At Yabo Tenmangu Shrine, visitors can observe traditional events such as Lion Dance, lantern parades, and Shinto music.



Tenka-ichi Market, Hitotsubashi Festival, and the Citizen's Festival [D-2]
First week of November (3days)

2 events are held simultaneously, with the Citizen's Festival joining in on the last day.



Bonfire at Yabo Tenmangu Shrine [D-4] November 3

At 6 pm, two 3m-high woodpiles are lit on fire. It is believed that anyone who is exposed to the smoke will be guaranteed good health.



Agricultural Festival [D-4]
Weekend in mid-November

Farmers' market and exhibition. Keep an eye out for vegetable treasure boats made by farmers! Visitors can receive free pansies.

Winter

冬 Fuyu

December~February



Classic Car Festival [D-4]
First Sunday in December

Every year car enthusiasts gather at Yabo Tenmangu and parade their cars, both classic and sports, for the entertainment on onlookers.



Illumination [D-2]
December

Winter evenings shine in a stunning array of Christmas lights. On Daigaku Street, 10 ginkgo trees glow with 90,000 LED bulbs.



Year End Bells. First Visit to Shrine [B-4/D-4]
December 31 to beginning of January

At Nanyo-ji Temple, visitors ring a bell to welcome in the new year. At Yabo Tenmangu, many students pray for success on their exams.



Dondo-yaki Bonfire
Mid-January

Amulets and New Year's decorations from the previous year are burned at Yabo Park No.3. Using branches of bamboo trees, visitors bake rice cakes over the bonfire.

Delicious casual dinning

From traditional Japanese dishes to Italian cuisine, an excellent array of restaurants, pubs and unique cafes are sure to please the palate of any visitor.



Flavorful fresh farm vegetables

From spinach and radish to pears and kaki (persimmon), an assortment of freshly picked vegetables and fruit can be purchased.





Daigaku Street (Autumn)
[D-2/D-3]

Enjoy the change of seasons. In Spring, stroll along Daigaku Street under a blanket of cherry blossoms, and in Fall, a blanket of yellow leaves of the ginkgo trees.



Hitotsubashi University
[D-2] *Permission required to enter the premises

A national university for social sciences, Hitotsubashi has produced many leaders of industry. After the Great Kanto Earthquake in 1923, it was moved from Kanda.



Tama Sports Center for the Disabled [D-3]
Fujimidai2-1-2, Kunitachi ☎+81-(0)42-573-3811

The facility houses a swimming pool and gym as well as offers a variety of lessons for the disabled. In summer, all people are welcome to join the annual festival.



Yagawa Green Zone
[A-3/B-3] Hagoromo 3 chome, Tachikawa

Situated on the border of Tachikawa, this forested wet land is an oasis for wild birds, and serves as the headwater of Yagawa River.



Aoyagi Inari Shrine
[A-4] Aoyagi 236, Kunitachi

The god of harvest, in the form of a stone fox, provides protection of crops in the Aoyagi area, where citizens enjoy annual events from Dondo Yaki to Bon Dance.



Nanyo-ji Temple
[B-4] Yaho 6218, Kunitachi

The Zen temple was rebuilt in the middle of Edo. The mandala ceiling of Kannon-do Hall created by the late Josaku MAEDA is shown only on the last day of the year.



Sakura Street (Spring)
[B-3/C-3/D-3]

Every Spring cherry blossoms form a beautiful arch across the street. Naturally, it is a most popular place for taking photographs.



Kunitachi Art Biennale
[D-2]

The art festival started in 2015 and is held every 2 years. At the end of the festival, the top 6 sculptures are arranged on either side of Daigaku Street.



Kunitachi Geisho Hall [C-3]
Fujimidai2-48-1, Kunitachi ☎+81-(0)42-574-1515

Located next to the public gym, this art/theatrical hall is equipped with a gallery and a room for practicing music as well as a multipurpose auditorium and studio.



"Mama-shita" Spring Water Park
[B-4] Yagawa 3-12, Kunitachi

"Mama" is a regional word meaning cliff line. Among the 10 springs located under the cliff line, the highest volume of water flows through "Mama-shita"



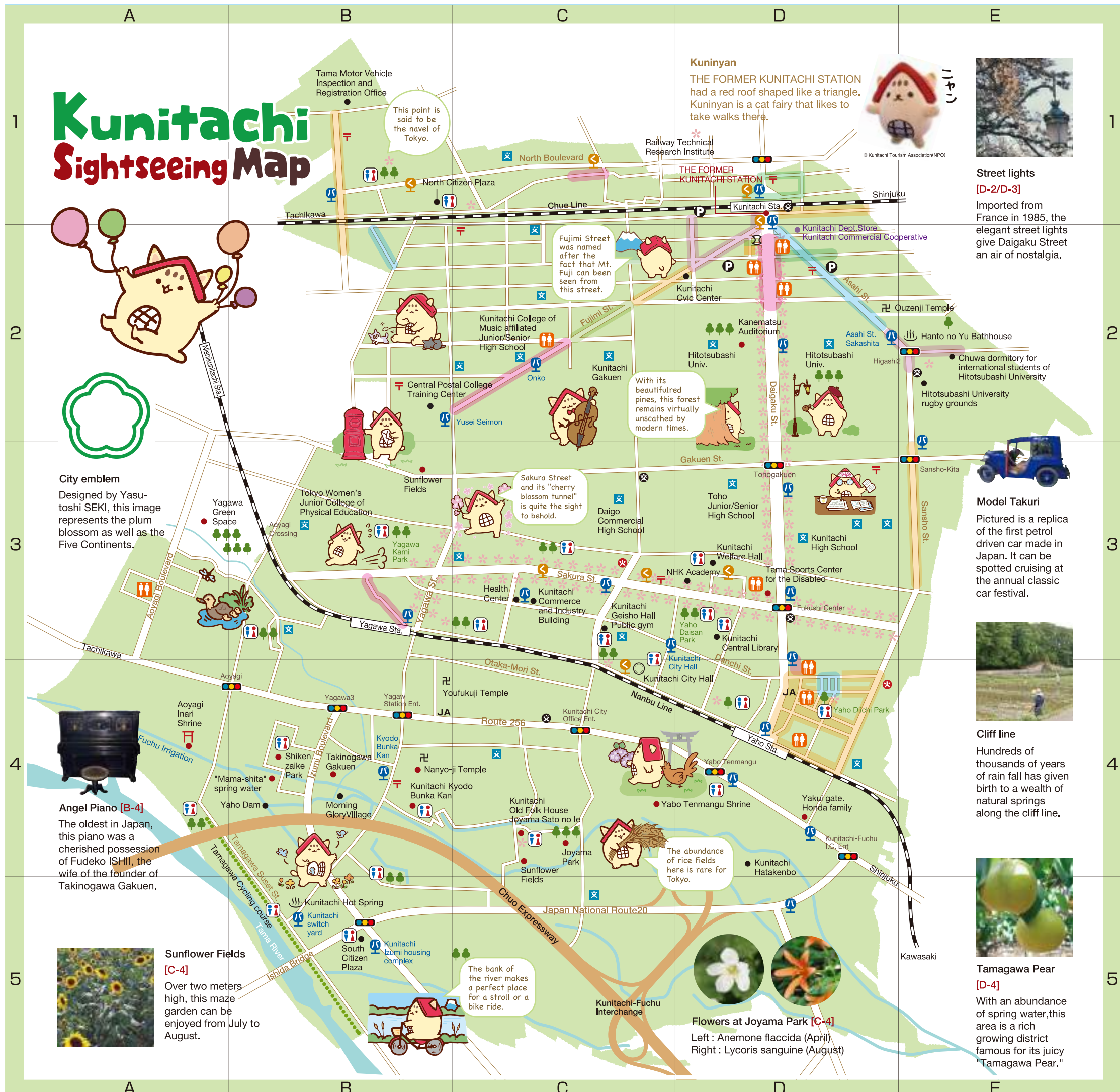
Main Hall of Takingogawa Gakuen
[B-4] Yaho 6312, Kunitachi

The first Christian welfare facility for the mentally disabled in Japan, Takingogawa Gakuen opens up its main hall to the public in the last week of October.



Tamagawa Cycling Course
[B-5]

Land bordering Tama river bed serves both as a soccer and baseball field. The cycling road running along the bank of the river reaches as far as Tokyo Bay.



THE FORMER KUNITACHI STATION with its red triangle roof



What is THE FORMER KUNITACHI STATION?

THE FORMER KUNITACHI STATION is, along with the Yabo Tenmangu shrine, the symbol of Kunitachi city. Active since 1926 (Taisho 15) to 2006 (Heisei 18), it acted as the city's entrance and meeting point, and an important and well-loved spot by citizens and visitors. As Tokyo's second oldest wooden train station after Harajuku, in 2006 it was nominated as Kunitachi city's Important Cultural Property.



Meeting under the triangle roof

In 2006, following the elevation of the JR Chuo line, its role as an operational train station sadly ceased and it was dismantled with utmost care, preserving its materials in municipal storage. Thanks to donations offered by citizens, in 2018 the station's rebuilding began, in the same location as before. After the restoration, THE FORMER KUNITACHI STATION will be separated into 3 rooms: the entrance hall, city information center, and exhibition room, where from April 2020 it will act as a hub for the spreading of the charms of the city. The new catchphrase, "Meeting under the triangle roof", contains the old meaning of meeting (to wait for a train) combined with its new role of meeting (with the city). Kunitachi will surely see new beauty and charm being born with the old train station in the center.

Legend

- Police box
- Fire station
- Park
- Exchange
- JA Agricultural cooperative
- Shrine/Temple
- City Hall
- School
- Public restroom
- Post office
- Bus
- Kinokuni Bus
- Hot spring/Public bath
- (Sightseeing spot for) cherry blossoms
- Regional merchants' association
- River/Irrigation

Restroom (available for use at shops)

- Popolo Shopping Center [D-2]
- Kinokuniya Supermarket, Kunitachi branch [D-2]
- Seiyu Supermarket, Aoyagi branch [A-3]
- Family Support shop [C-2]
- Tama Sports Center for the Disabled [D-4]
- Toretano (green grocer) [D-4]
- Cafe Kokotano [D-4]
- Yayakoshiya (welfare cafe) [D-4]
- Tamabira Sora (gathering spot) [D-4]

Emergency ☎119 Police ☎110
Tama Traffic (Taxi) ☎+81-(0)42-572-3161
Ginsei Traffic (Taxi) ☎+81-(0)42-575-0458



Yabo Tenmangu Shrine
[D-4] Yaho 5209, Kunitachi

Among various items designated as cultural assets, stone dogs stand guard over the Shrine. Works of local sculptor, SEKI, intersperse the tranquil sylvan grounds.



Joyama Park [C-4] Yaho 1700, Kunitachi
(Tokyo Historical Natural Environmental Area)

Once the site of a powerful family in the Middle Ages, this land is endowed with a forest that has remained largely untouched by modernization.



Fuchu Irrigation
[B-4/C-4 etc.]

During summer, the miniature canals that form the irrigation systems are a precious environmental haven providing sanctuary for insects and small fish.



Kunitachi Kyodo Bunka Kan [B-4]
Yaho 6231, Kunitachi ☎+81-(0)42-576-0211

The museum exhibits a wealth of material on the history, customs, arts, and nature of the area and is a comfortable refuge from the busy streets.



Kunitachi Old Folk House [C-4]
Izumi 5-21-20, Kunitachi ☎+81-(0)42-575-3300 (city-designated cultural property)

Thatched roof farm house from the Edo period in Joyama Park. Inside, an earthen floor and hearth as well as daily tools show what life was like over a hundred years ago.



Visitors can purchase from an assortment of gifts such as hand towels and post cards with pictures or designs depicting the history and nature of Kunitachi.



Yakui Gate of the Honda Family
[D-4] Yaho 5122, Kunitachi

From calligraphers to doctors, the Honda Family has been turning out people of distinction since the Edo period. (The inner area is not usually open to the public)



Joyama Sato no Ie [C-4]
Izumi 5-21-20, Kunitachi ☎+81-(0)42-505-5190

Information center for agriculture, located in Joyama Park. Here various events such as Harvest Day are planned. The facility is also rented out for private use.



Experience in Rice Cultivation
[C-4] Izumi 5-21-20

From rice planting in June to rice harvesting in October, the rice paddy in front of the Old Folk House serves as an educational site where 5th graders can try their hand at rice cultivation.

Seasonal events at the Museum and the Old Folk House

* held at the Old Folk House

Jan. Mayudama decorations

In hopes of a good harvest for silkworm culture, oak trees are decorated with rice dumplings.*

Feb. Setsubun Festival

People scatter soybeans to drive away evil spirits, shouting "Happiness in, evil out."*

Mar. The Doll's (Girl's) Festival

Traditional dolls are displayed in a tiered stand during the Girl's Festival.*

May. The Boy's Festival

Marial dolls are displayed and in the garden, carp streamers swim in the breeze.*

July. The Star Festival

People hang strips of paper inscribed with their wishes on bamboo branches.*

Aug. Making straw zori

Local elders teach how to make zori (sandals) from rice straw.

Sep. Full moon night

People enjoy the autumn moon while making rice dumplings decorated with pampas grass.*

Nov. Origami lesson

Participants fold pieces of paper to create figures of the Chinese zodiac animals.

Dec. Sacred festoon

Participants make their own New Year's decorations with rice straw harvested in Kunitachi.